



Roberts Lab_2011-03-21 13-52-24_CC009827.pcrd

3/22/2011 9:18 AM

Report Information

User: BioRad/Roberts Lab
Data File Name: Roberts Lab_2011-03-21 13-52-24_CC009827.pcrd
Data File Path: C:\Users\srlab\Documents\My Dropbox\Roberts Lab CFX96 Data (7)\Sam
Well Group Name: All Wells
Report Differs from Last Save: No

Run Setup

Run Information

Run User: Roberts Lab
Run Date: 3/21/2011 1:52 PM
ID:
Notes: Post-run notes: B3, B9, H9, H3 exhibit weird melt curves. Should note be used in analysis.
Sample Volume: 25
Temperature Control Mode: Calculated
Lid Temperature: 105
Base Serial Number: CC009827
Optical Head Serial Number: 785BR3659

Protocol

1: 95.0°C for 10:00
2: 95.0°C for 0:15
3: 55.0°C for 0:15
4: 72.0°C for 0:30
Plate Read
5: GOTO 2, 39 more times
6: 95.0°C for 0:10
7: Melt Curve 65.0°C to 95.0°C : Increment 0.5°C 0:05
Plate Read

Plate Display

	1	2	3	4	5	6	7	8	9	10	11	12
A	Unk-1 TIMP3(BB) BB01	Unk-9 TIMP3(BB) BB12	Unk-17 TIMP3(BB) DH01	Unk-25 TIMP3(BB) DH09	Unk-33 TIMP3(BB) DH17		Unk-1 TIMP3(BB) BB01	Unk-9 TIMP3(BB) BB12	Unk-17 TIMP3(BB) DH01	Unk-25 TIMP3(BB) DH09	Unk-33 TIMP3(BB) DH17	
B	Unk-2 TIMP3(BB) BB03	Unk-10 TIMP3(BB) BB13	Unk-18 TIMP3(BB) DH02	Unk-26 TIMP3(BB) DH10	Unk-34 TIMP3(BB) DH18		Unk-2 TIMP3(BB) BB03	Unk-10 TIMP3(BB) BB13	Unk-18 TIMP3(BB) DH02	Unk-26 TIMP3(BB) DH10	Unk-34 TIMP3(BB) DH18	

	1	2	3	4	5	6	7	8	9	10	11	12
C	Unk-3 TIMP3(BB) BB04	Unk-11 TIMP3(BB) BB14	Unk-19 TIMP3(BB) DH03	Unk-27 TIMP3(BB) DH11	Unk-35 TIMP3(BB) DH19		Unk-3 TIMP3(BB) BB04	Unk-11 TIMP3(BB) BB14	Unk-19 TIMP3(BB) DH03	Unk-27 TIMP3(BB) DH11	Unk-35 TIMP3(BB) DH19	
D	Unk-4 TIMP3(BB) BB07	Unk-12 TIMP3(BB) BB16	Unk-20 TIMP3(BB) DH04	Unk-28 TIMP3(BB) DH12	Unk-36 TIMP3(BB) DH20		Unk-4 TIMP3(BB) BB07	Unk-12 TIMP3(BB) BB16	Unk-20 TIMP3(BB) DH04	Unk-28 TIMP3(BB) DH12	Unk-36 TIMP3(BB) DH20	
E	Unk-5 TIMP3(BB) BB08	Unk-13 TIMP3(BB) BB17	Unk-21 TIMP3(BB) DH05	Unk-29 TIMP3(BB) DH13	NTC TIMP3(BB)		Unk-5 TIMP3(BB) BB08	Unk-13 TIMP3(BB) BB17	Unk-21 TIMP3(BB) DH05	Unk-29 TIMP3(BB) DH13	NTC TIMP3(BB)	
F	Unk-6 TIMP3(BB) BB09	Unk-14 TIMP3(BB) BB18	Unk-22 TIMP3(BB) DH06	Unk-30 TIMP3(BB) DH14	NTC TIMP3(BB)		Unk-6 TIMP3(BB) BB09	Unk-14 TIMP3(BB) BB18	Unk-22 TIMP3(BB) DH06	Unk-30 TIMP3(BB) DH14	NTC TIMP3(BB)	
G	Unk-7 TIMP3(BB) BB10	Unk-15 TIMP3(BB) BB19	Unk-23 TIMP3(BB) DH07	Unk-31 TIMP3(BB) DH15	NTC TIMP3(BB)		Unk-7 TIMP3(BB) BB10	Unk-15 TIMP3(BB) BB19	Unk-23 TIMP3(BB) DH07	Unk-31 TIMP3(BB) DH15	NTC TIMP3(BB)	
H	Unk-8 TIMP3(BB) BB11	Unk-16 TIMP3(BB) BB20	Unk-24 TIMP3(BB) DH08	Unk-32 TIMP3(BB) DH16	NTC TIMP3(BB)		Unk-8 TIMP3(BB) BB11	Unk-16 TIMP3(BB) BB20	Unk-24 TIMP3(BB) DH08	Unk-32 TIMP3(BB) DH16	NTC TIMP3(BB)	

Quantification

Step #: 4

Analysis Mode: Fluorophore

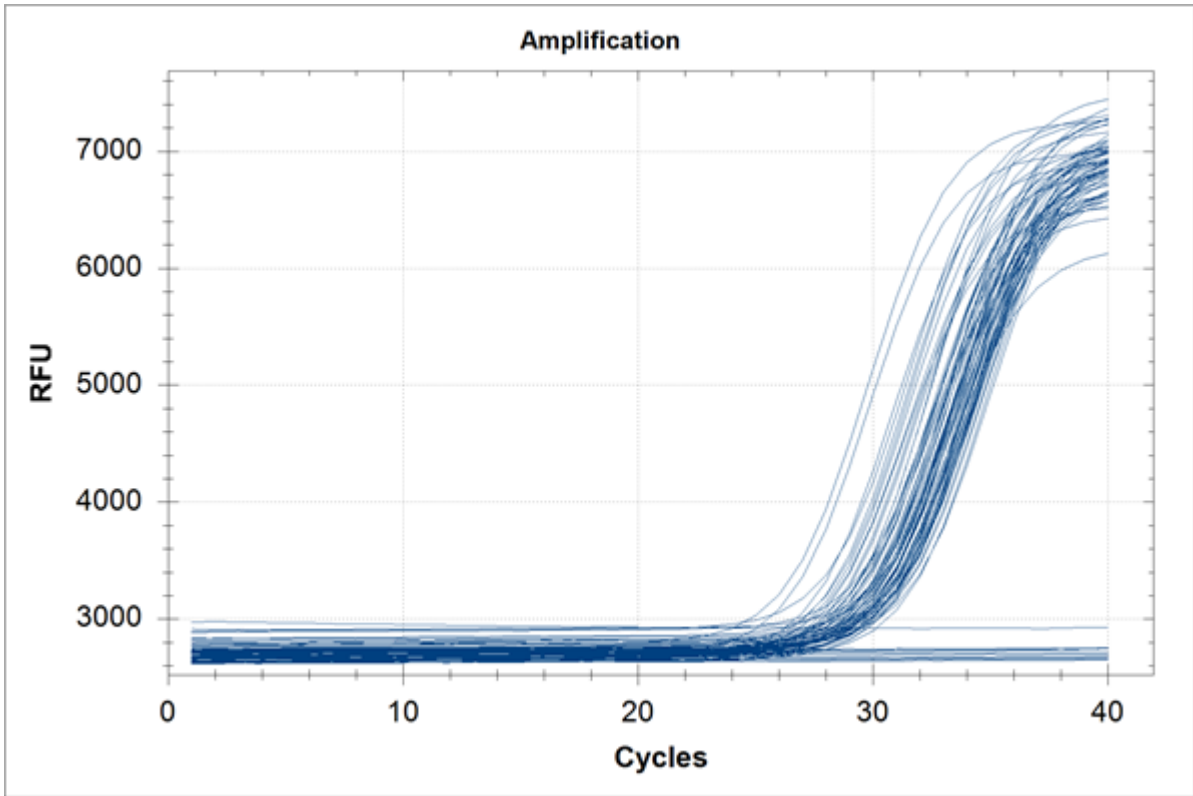
Cq Determination: Single Threshold

Baseline Method:

FAM: Auto Calculated

Threshold Setting:

FAM: None, Auto Calculated



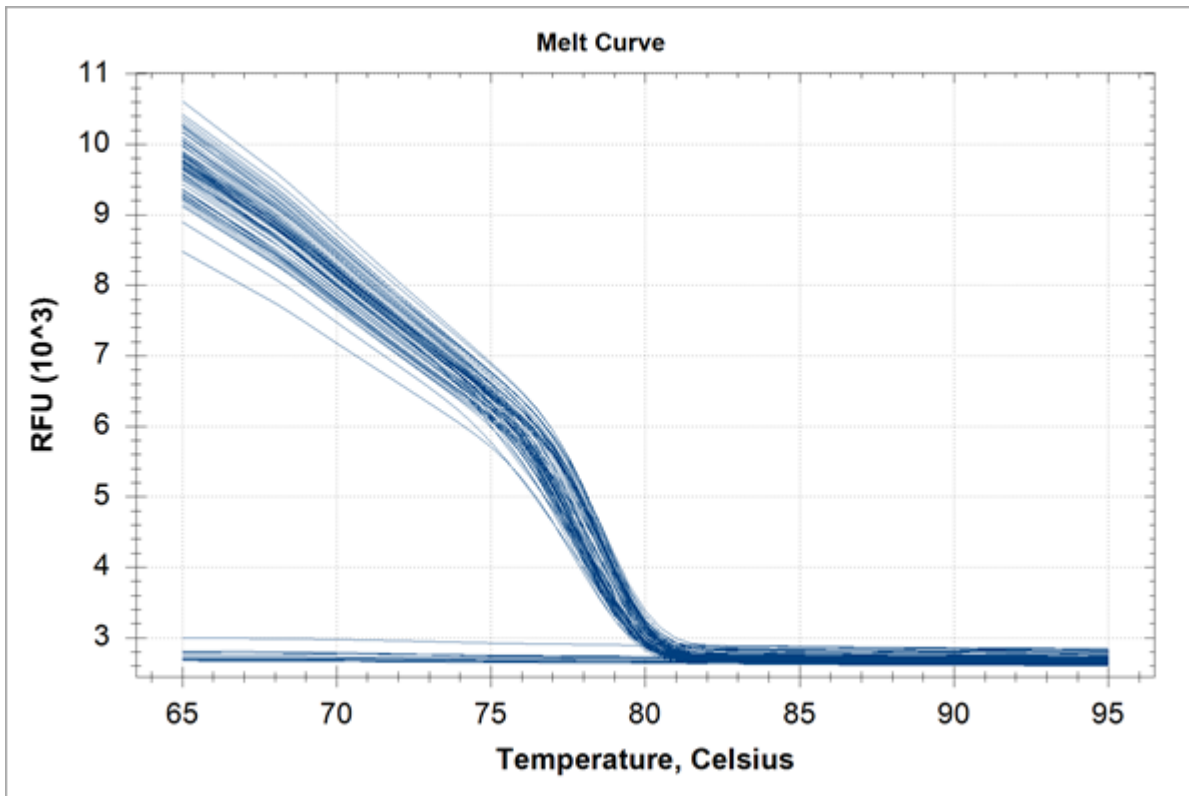
Quantification Data

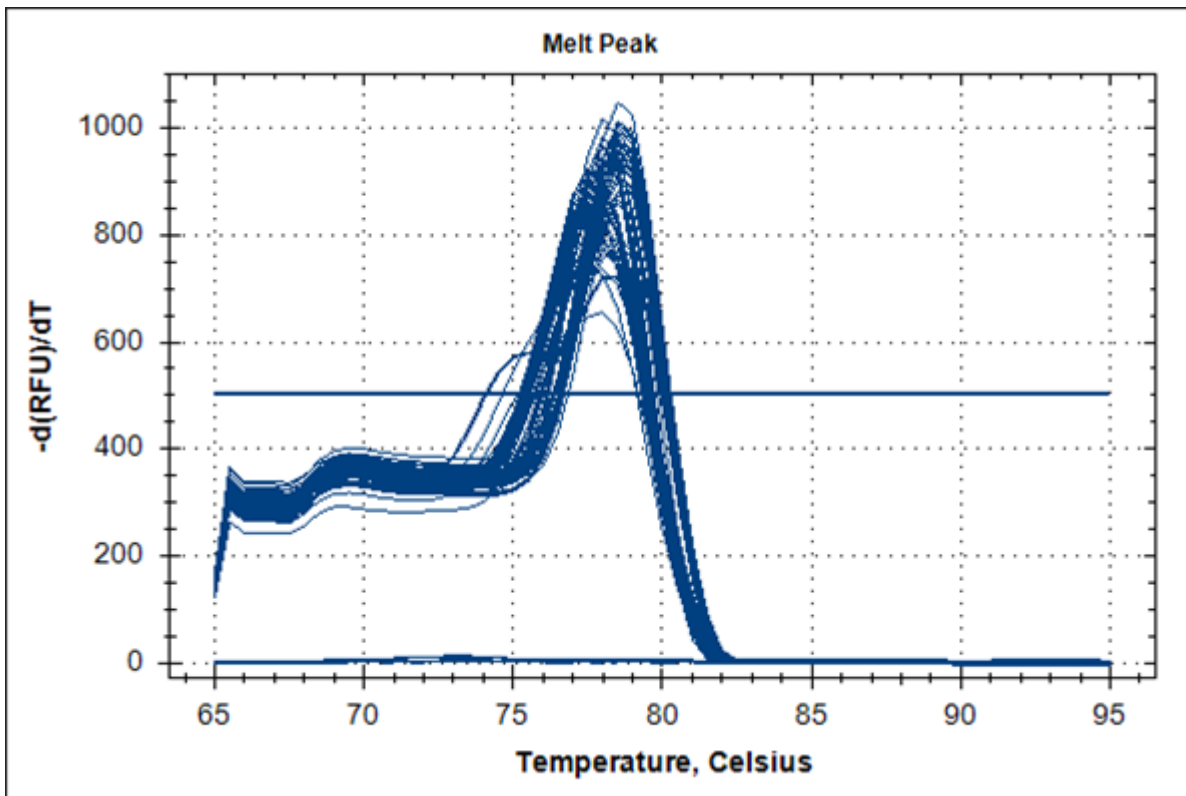
Well	Fluor	Target	Content	Sample	Cq	Cq Mean	Cq Std. Dev
A01	FAM	TIMP3(BB)	Unkn-01	BB01	N/A	0.00	0.000
A02	FAM	TIMP3(BB)	Unkn-09	BB12	N/A	0.00	0.000
A03	FAM	TIMP3(BB)	Unkn-17	DH01	N/A	0.00	0.000
A04	FAM	TIMP3(BB)	Unkn-25	DH09	N/A	0.00	0.000
A05	FAM	TIMP3(BB)	Unkn-33	DH17	N/A	0.00	0.000
A07	FAM	TIMP3(BB)	Unkn-01	BB01	N/A	0.00	0.000
A08	FAM	TIMP3(BB)	Unkn-09	BB12	N/A	0.00	0.000
A09	FAM	TIMP3(BB)	Unkn-17	DH01	N/A	0.00	0.000
A10	FAM	TIMP3(BB)	Unkn-25	DH09	N/A	0.00	0.000
A11	FAM	TIMP3(BB)	Unkn-33	DH17	N/A	0.00	0.000
B01	FAM	TIMP3(BB)	Unkn-02	BB03	N/A	0.00	0.000
B02	FAM	TIMP3(BB)	Unkn-10	BB13	N/A	0.00	0.000
B03	FAM	TIMP3(BB)	Unkn-18	DH02	N/A	0.00	0.000
B04	FAM	TIMP3(BB)	Unkn-26	DH10	N/A	0.00	0.000
B05	FAM	TIMP3(BB)	Unkn-34	DH18	N/A	0.00	0.000
B07	FAM	TIMP3(BB)	Unkn-02	BB03	N/A	0.00	0.000
B08	FAM	TIMP3(BB)	Unkn-10	BB13	N/A	0.00	0.000
B09	FAM	TIMP3(BB)	Unkn-18	DH02	N/A	0.00	0.000
B10	FAM	TIMP3(BB)	Unkn-26	DH10	N/A	0.00	0.000
B11	FAM	TIMP3(BB)	Unkn-34	DH18	N/A	0.00	0.000
C01	FAM	TIMP3(BB)	Unkn-03	BB04	N/A	0.00	0.000
C02	FAM	TIMP3(BB)	Unkn-11	BB14	N/A	0.00	0.000
C03	FAM	TIMP3(BB)	Unkn-19	DH03	N/A	0.00	0.000
C04	FAM	TIMP3(BB)	Unkn-27	DH11	N/A	0.00	0.000
C05	FAM	TIMP3(BB)	Unkn-35	DH19	N/A	0.00	0.000
C07	FAM	TIMP3(BB)	Unkn-03	BB04	N/A	0.00	0.000
C08	FAM	TIMP3(BB)	Unkn-11	BB14	N/A	0.00	0.000
C09	FAM	TIMP3(BB)	Unkn-19	DH03	N/A	0.00	0.000
C10	FAM	TIMP3(BB)	Unkn-27	DH11	N/A	0.00	0.000
C11	FAM	TIMP3(BB)	Unkn-35	DH19	N/A	0.00	0.000
D01	FAM	TIMP3(BB)	Unkn-04	BB07	N/A	0.00	0.000
D02	FAM	TIMP3(BB)	Unkn-12	BB16	N/A	0.00	0.000
D03	FAM	TIMP3(BB)	Unkn-20	DH04	N/A	0.00	0.000
D04	FAM	TIMP3(BB)	Unkn-28	DH12	N/A	0.00	0.000
D05	FAM	TIMP3(BB)	Unkn-36	DH20	N/A	0.00	0.000
D07	FAM	TIMP3(BB)	Unkn-04	BB07	N/A	0.00	0.000
D08	FAM	TIMP3(BB)	Unkn-12	BB16	N/A	0.00	0.000
D09	FAM	TIMP3(BB)	Unkn-20	DH04	N/A	0.00	0.000
D10	FAM	TIMP3(BB)	Unkn-28	DH12	N/A	0.00	0.000
D11	FAM	TIMP3(BB)	Unkn-36	DH20	N/A	0.00	0.000
E01	FAM	TIMP3(BB)	Unkn-05	BB08	N/A	0.00	0.000
E02	FAM	TIMP3(BB)	Unkn-13	BB17	N/A	0.00	0.000
E03	FAM	TIMP3(BB)	Unkn-21	DH05	N/A	0.00	0.000
E04	FAM	TIMP3(BB)	Unkn-29	DH13	N/A	0.00	0.000
E05	FAM	TIMP3(BB)	NTC		N/A	0.00	0.000
E07	FAM	TIMP3(BB)	Unkn-05	BB08	N/A	0.00	0.000
E08	FAM	TIMP3(BB)	Unkn-13	BB17	N/A	0.00	0.000

Well	Fluor	Target	Content	Sample	Cq	Cq Mean	Cq Std. Dev
E09	FAM	TIMP3(BB)	Unkn-21	DH05	N/A	0.00	0.000
E10	FAM	TIMP3(BB)	Unkn-29	DH13	N/A	0.00	0.000
E11	FAM	TIMP3(BB)	NTC		N/A	0.00	0.000
F01	FAM	TIMP3(BB)	Unkn-06	BB09	N/A	0.00	0.000
F02	FAM	TIMP3(BB)	Unkn-14	BB18	N/A	0.00	0.000
F03	FAM	TIMP3(BB)	Unkn-22	DH06	N/A	0.00	0.000
F04	FAM	TIMP3(BB)	Unkn-30	DH14	N/A	0.00	0.000
F05	FAM	TIMP3(BB)	NTC		N/A	0.00	0.000
F07	FAM	TIMP3(BB)	Unkn-06	BB09	N/A	0.00	0.000
F08	FAM	TIMP3(BB)	Unkn-14	BB18	N/A	0.00	0.000
F09	FAM	TIMP3(BB)	Unkn-22	DH06	N/A	0.00	0.000
F10	FAM	TIMP3(BB)	Unkn-30	DH14	N/A	0.00	0.000
F11	FAM	TIMP3(BB)	NTC		N/A	0.00	0.000
G01	FAM	TIMP3(BB)	Unkn-07	BB10	N/A	0.00	0.000
G02	FAM	TIMP3(BB)	Unkn-15	BB19	N/A	0.00	0.000
G03	FAM	TIMP3(BB)	Unkn-23	DH07	N/A	0.00	0.000
G04	FAM	TIMP3(BB)	Unkn-31	DH15	N/A	0.00	0.000
G05	FAM	TIMP3(BB)	NTC		N/A	0.00	0.000
G07	FAM	TIMP3(BB)	Unkn-07	BB10	N/A	0.00	0.000
G08	FAM	TIMP3(BB)	Unkn-15	BB19	N/A	0.00	0.000
G09	FAM	TIMP3(BB)	Unkn-23	DH07	N/A	0.00	0.000
G10	FAM	TIMP3(BB)	Unkn-31	DH15	N/A	0.00	0.000
G11	FAM	TIMP3(BB)	NTC		N/A	0.00	0.000
H01	FAM	TIMP3(BB)	Unkn-08	BB11	N/A	0.00	0.000
H02	FAM	TIMP3(BB)	Unkn-16	BB20	N/A	0.00	0.000
H03	FAM	TIMP3(BB)	Unkn-24	DH08	N/A	0.00	0.000
H04	FAM	TIMP3(BB)	Unkn-32	DH16	N/A	0.00	0.000
H05	FAM	TIMP3(BB)	NTC		N/A	0.00	0.000
H07	FAM	TIMP3(BB)	Unkn-08	BB11	N/A	0.00	0.000
H08	FAM	TIMP3(BB)	Unkn-16	BB20	N/A	0.00	0.000
H09	FAM	TIMP3(BB)	Unkn-24	DH08	N/A	0.00	0.000
H10	FAM	TIMP3(BB)	Unkn-32	DH16	N/A	0.00	0.000
H11	FAM	TIMP3(BB)	NTC		N/A	0.00	0.000

Melt Curve

Step #: 7





Melt Curve Data

Well	Fluor	Target	Content	Sample	Melt Temp
A01	FAM	TIMP3(BB)	Unkn-01	BB01	None
A02	FAM	TIMP3(BB)	Unkn-09	BB12	77.50
A03	FAM	TIMP3(BB)	Unkn-17	DH01	78.50
A04	FAM	TIMP3(BB)	Unkn-25	DH09	78.50
A05	FAM	TIMP3(BB)	Unkn-33	DH17	77.50
A07	FAM	TIMP3(BB)	Unkn-01	BB01	None
A08	FAM	TIMP3(BB)	Unkn-09	BB12	77.50
A09	FAM	TIMP3(BB)	Unkn-17	DH01	78.50
A10	FAM	TIMP3(BB)	Unkn-25	DH09	78.50
A11	FAM	TIMP3(BB)	Unkn-33	DH17	77.50
B01	FAM	TIMP3(BB)	Unkn-02	BB03	78.00
B02	FAM	TIMP3(BB)	Unkn-10	BB13	78.50
B03	FAM	TIMP3(BB)	Unkn-18	DH02	75.50
B03	FAM	TIMP3(BB)	Unkn-18	DH02	78.00
B04	FAM	TIMP3(BB)	Unkn-26	DH10	77.50
B05	FAM	TIMP3(BB)	Unkn-34	DH18	78.00
B07	FAM	TIMP3(BB)	Unkn-02	BB03	78.00
B08	FAM	TIMP3(BB)	Unkn-10	BB13	78.50
B09	FAM	TIMP3(BB)	Unkn-18	DH02	75.50
B09	FAM	TIMP3(BB)	Unkn-18	DH02	78.50
B10	FAM	TIMP3(BB)	Unkn-26	DH10	78.00
B11	FAM	TIMP3(BB)	Unkn-34	DH18	78.00
C01	FAM	TIMP3(BB)	Unkn-03	BB04	77.50
C02	FAM	TIMP3(BB)	Unkn-11	BB14	77.50
C03	FAM	TIMP3(BB)	Unkn-19	DH03	77.50

Well	Fluor	Target	Content	Sample	Melt Temp
C04	FAM	TIMP3(BB)	Unkn-27	DH11	78.50
C05	FAM	TIMP3(BB)	Unkn-35	DH19	78.50
C07	FAM	TIMP3(BB)	Unkn-03	BB04	77.50
C08	FAM	TIMP3(BB)	Unkn-11	BB14	77.50
C09	FAM	TIMP3(BB)	Unkn-19	DH03	77.50
C10	FAM	TIMP3(BB)	Unkn-27	DH11	78.50
C11	FAM	TIMP3(BB)	Unkn-35	DH19	78.50
D01	FAM	TIMP3(BB)	Unkn-04	BB07	78.00
D02	FAM	TIMP3(BB)	Unkn-12	BB16	77.50
D03	FAM	TIMP3(BB)	Unkn-20	DH04	78.50
D04	FAM	TIMP3(BB)	Unkn-28	DH12	78.50
D05	FAM	TIMP3(BB)	Unkn-36	DH20	78.00
D07	FAM	TIMP3(BB)	Unkn-04	BB07	77.50
D08	FAM	TIMP3(BB)	Unkn-12	BB16	77.50
D09	FAM	TIMP3(BB)	Unkn-20	DH04	78.50
D10	FAM	TIMP3(BB)	Unkn-28	DH12	78.50
D11	FAM	TIMP3(BB)	Unkn-36	DH20	78.00
E01	FAM	TIMP3(BB)	Unkn-05	BB08	79.00
E02	FAM	TIMP3(BB)	Unkn-13	BB17	78.50
E03	FAM	TIMP3(BB)	Unkn-21	DH05	77.50
E04	FAM	TIMP3(BB)	Unkn-29	DH13	78.50
E05	FAM	TIMP3(BB)	NTC		None
E07	FAM	TIMP3(BB)	Unkn-05	BB08	78.50
E08	FAM	TIMP3(BB)	Unkn-13	BB17	78.50
E09	FAM	TIMP3(BB)	Unkn-21	DH05	77.50
E10	FAM	TIMP3(BB)	Unkn-29	DH13	78.50
E11	FAM	TIMP3(BB)	NTC		None
F01	FAM	TIMP3(BB)	Unkn-06	BB09	78.50
F02	FAM	TIMP3(BB)	Unkn-14	BB18	78.50
F03	FAM	TIMP3(BB)	Unkn-22	DH06	78.50
F04	FAM	TIMP3(BB)	Unkn-30	DH14	78.50
F05	FAM	TIMP3(BB)	NTC		None
F07	FAM	TIMP3(BB)	Unkn-06	BB09	78.50
F08	FAM	TIMP3(BB)	Unkn-14	BB18	78.50
F09	FAM	TIMP3(BB)	Unkn-22	DH06	78.50
F10	FAM	TIMP3(BB)	Unkn-30	DH14	78.50
F11	FAM	TIMP3(BB)	NTC		None
G01	FAM	TIMP3(BB)	Unkn-07	BB10	78.00
G02	FAM	TIMP3(BB)	Unkn-15	BB19	78.50
G03	FAM	TIMP3(BB)	Unkn-23	DH07	77.50
G04	FAM	TIMP3(BB)	Unkn-31	DH15	78.00
G05	FAM	TIMP3(BB)	NTC		None
G07	FAM	TIMP3(BB)	Unkn-07	BB10	78.00
G08	FAM	TIMP3(BB)	Unkn-15	BB19	78.50
G09	FAM	TIMP3(BB)	Unkn-23	DH07	77.50
G10	FAM	TIMP3(BB)	Unkn-31	DH15	78.00
G11	FAM	TIMP3(BB)	NTC		None
H01	FAM	TIMP3(BB)	Unkn-08	BB11	77.50
H02	FAM	TIMP3(BB)	Unkn-16	BB20	77.50
H03	FAM	TIMP3(BB)	Unkn-24	DH08	78.00

Well	Fluor	Target	Content	Sample	Melt Temp
H04	FAM	TIMP3(BB)	Unkn-32	DH16	78.50
H05	FAM	TIMP3(BB)	NTC		None
H07	FAM	TIMP3(BB)	Unkn-08	BB11	77.50
H08	FAM	TIMP3(BB)	Unkn-16	BB20	77.50
H09	FAM	TIMP3(BB)	Unkn-24	DH08	78.00
H10	FAM	TIMP3(BB)	Unkn-32	DH16	78.50
H11	FAM	TIMP3(BB)	NTC		None

QC Parameters

Description	Value	Use	Results	Exclude Wells	All excluded wells
Negative control with a Cq less than	38	True		False	
NTC with a Cq less than	38	True		False	
NRT with a Cq less than	38	True		False	
Positive control with a Cq greater than	30	True		False	
Unknown without a Cq	N/A	True	FAM:A1, A2, A3, A4, A5, A7, A8, A9, A10, A11, B1, B2, B3, B4, B5, B7, B8, B9, B10, B11, C1, C2, C3, C4, C5, C7, C8, C9, C10, C11, D1, D2, D3, D4, D5, D7, D8, D9, D10, D11, E1, E2, E3, E4, E7, E8, E9, E10, F1, F2, F3, F4, F7, F8, F9, F10, G1, G2, G3, G4, G	False	
Standard without a Cq	N/A	True		False	
Efficiency greater than	110.0	True			
Efficiency less than	90.0	True			
Std Curve R ² less than	0.980	True			
Replicate group Cq Std Dev greater than	0.20	True		False	